

# INTRODUCING BRAND NEW MANTSINEN 60



The carbon emission of this printed matter is evaluated according to ClimateCalc.  
www.climatecalc.eu  
Cert. no. CC-000084/F1



## THE STRONGEST LINK IN THE GLOBAL LOGISTICS CHAIN

Mantsinen provides more efficiency, speed and capacity for our customers in global logistics chain, operating with heavy and basic industry raw materials and semi-finished products. We are the hands-on frontrunner in material handling.

## MANTSINEN GROUP LTD OY

Välkankaantie 3, 80400 Ylämylly, Finland | [www.mantsinen.com](http://www.mantsinen.com)

# MANTSINEN 60

# 500 000 000 m<sup>3</sup>

# OF EXPERIENCE

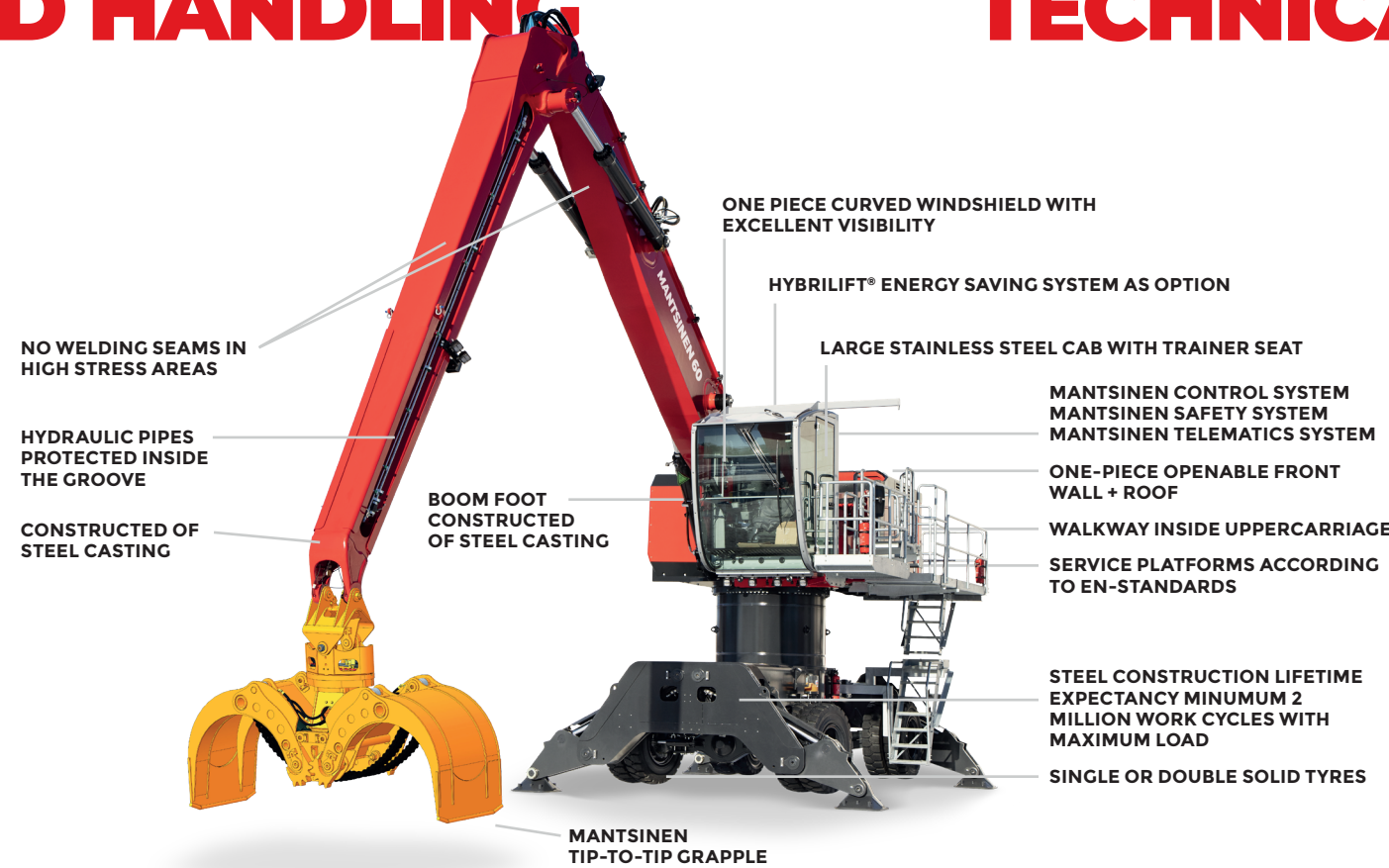


# ROUNDWOOD HANDLING

At Mantsinen we carry tons of experience in roundwood handling – a lot more than just tons. When every second counts in logistics flow, there is no room for missteps.

Our in-house handling experience of over 500 000 000 m<sup>3</sup> of wood handling has taught us a thing or two. All this experience combined with top-of-the-class machine manufacturing knowledge has created a superior machine for wood handling.

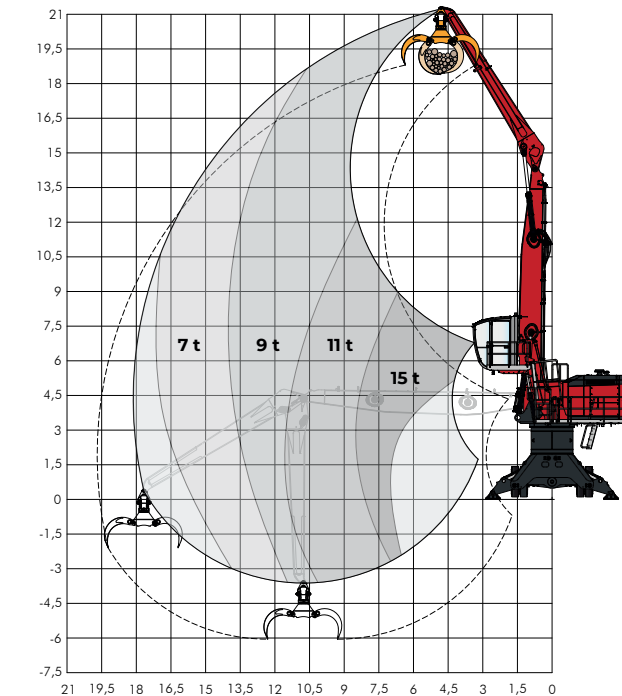
Combining agility, intelligence and strength, the Mantsinen 60 comes equipped with the **Mantsinen Telematics System (MTS)**, **Mantsinen Safety System (MSS)** and **Mantsinen Control System (MCS)** as standard.



# TECHNICAL SPECIFICATION

<b>TOTAL WEIGHT</b>	65 to 80 tons according to configuration
<b>HORIZONTAL REACH</b>	16–20,5 m
<b>ENGINE</b>	Diesel Volvo TAD 882 VE 210 kW, Stage V, (EU)
	Diesel Volvo TAD 872 VE 210 kW, Tier 4f, (USA)
	Diesel Volvo TAD 852 VE 210kW, Stage IIIA / IIIA
<b>WORKING LIGHTS</b>	LED, 4 pcs underneath of cabin and 4 pcs at stick
<b>MAX OPERATION PRESSURE</b>	350 bar
<b>OIL FLOW</b>	2 x 330 l/min max
<b>SLEWING RING</b>	Diameter 1 940 mm
<b>SWING TORQUE</b>	124 kNm
<b>SWING SPEED</b>	7,0 rpm max
<b>HYDRAULIC OIL TANK</b>	650 l
<b>FUEL TANK</b>	500 l
<b>ENGINE OIL</b>	27 l
<b>ADBLUE TANK</b>	45 l

<b>WHEELED UNDERCARRIAGE</b>	
Height	1,7 m
Wheelbase	3 500 mm
Wheel gauge	2 830 mm
Tyres	8x 12.00-24 solid rubber tyres
Drive speed	0 – 10 km/h
<b>WHEELED UNDERCARRIAGE, HEAVY DUTY</b>	
Heights	1,9 m. 3,0 / 4,0 / 5,0 m with pylon
Wheelbase	3 940 mm
Wheel gauge	2 830 mm
Tyres	8x 14.00-24 solid rubber tyres
Drive speed	0 – 10 km/h
<b>UNDERCARRIAGE 60R WITH STANDARD TRACKS</b>	
Heights	1,7 as standard. 2,8 / 3,8 / 4,8 m with pylon
Track shoes	670 mm flat shoes / 550 mm three grouser shoes
<b>UNDERCARRIAGE 60R WITH PROLONGED HEAVY DUTY TRACKS</b>	
Heights	1,8 as standard. 2,9 / 3,9 / 4,9 m with pylon
Track shoes	670 / 850 mm flat shoes / 550 mm three grouser shoes



Example lifting capacity range with 10 m straight boom and 8 m stick. Ask for your optimal configuration.